

ELTODO a.s.

Prague, tunnel Cholupice, tunnel Lochkov

2010
Control of fans in tunnel

Commissioning and startup:

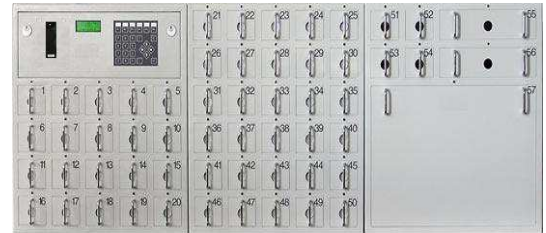
- 8 pcs. Frequency Drives PowerFlex 70, 400V, 30kW
- 34 pcs. softstarters SMC-Flex, 400V 30kW for air fan tunnel control.


Raisa

Czech Republic

2010
Cabinets for storage of keys and guns

Production of special attested cabinets which serve as a facility for safety and registered storage of keys, mobile phones, briefcases and guns. By these "safe-deposit boxes" are mostly equipped units of the Army of the Czech Republic, Military and Municipal police. In 2010 it was produced a total of 5 sets of this cabinets.


CEMEX

Latvia, Broceni

2009
Control of ID fans in new "dry process" cement plant

Start-up of MV Variable Frequency Drives and MV cabinets (including bypass) for control induction motors driving ID fans. Total of 5pcs. of MV Variable Frequency Drive Rockwell Automation (Allen-Bradley) PowerFlex 7000 and MV cabinets 1519AT, 1512M, 1512DM with rated power of:

- MV Variable Frequency Drive Rockwell Automation (Allen-Bradley) PowerFlex 7000, 600kW, 6.3kV, air cooled.
- MV Variable Frequency Drive Rockwell Automation (Allen-Bradley) PowerFlex 7000, 1000kW, 6.3kV, air cooled.
- MV Variable Frequency Drive Rockwell Automation (Allen-Bradley) PowerFlex 7000, 2500kW, 6.3kV, liquid cooled.
- MV Variable Frequency Drive Rockwell Automation (Allen-Bradley) PowerFlex 7000, 3800kW, 6.3kV, liquid cooled.
- MV Variable Frequency Drive Rockwell Automation (Allen-Bradley) PowerFlex 7000, 4500kW, 6.3kV, liquid cooled.

Arcelor Mittal

Germany, Bremen

2008
Control of pump in steel industry

Start-up of MV Variable Frequency Drive for control of 1pc. induction motor driving fan.

MV Variable Frequency Drive Rockwell Automation (Allen-Bradley) PowerFlex 7000, 3750kW, 6.3kV, liquid cooled.

British Petroleum (BP)

Azerbaijan, Baku, Sangachal Terminal

2008
Control of pump in refinery BP

Service and start-up of MV Variable Frequency Drive supplying induction motor driving crude oil pump.

MV Variable Frequency Drive Rockwell Automation (Allen-Bradley) PowerFlex 7000, 5650kW, 6.6kV, liquid cooled.

LKAB

Sweden, Kiruna

2008
Control of fan in iron ore mine

Start-up of 3 pcs. MV Variable Frequency Drives for control 3 pcs. induction motors for driving fans.

MV Variable Frequency Drive Rockwell Automation (Allen-Bradley) PowerFlex 7000, 5500kW, 6.3kV, liquid cooled.

MV Variable Frequency Drive Rockwell Automation (Allen-Bradley) PowerFlex 7000, 3600kW, 6.3kV, liquid cooled.

MV Variable Frequency Drive Rockwell Automation (Allen-Bradley) PowerFlex 7000, 2525kW, 6.3kV, liquid cooled.

Reditelstvi silnic a dalnic

Czech Republic

2006
Pressure control in pipeline

Start up of Variable Frequency Drive PowerFlex 70, regulation to constant pressure in fire pumping station in tunnel Valik at Plzen. Variable Frequency Drive PowerFlex 70, 400V, 18.5kW.

MosTeploEnerg

Russia, Moscow

2006 - 2007
Control pumps in Heating Station Mitino

Start up of 4 pcs. MV Variable Frequency Drives with synchronous transfer system and MV cabinets to control 8pcs. asynchronous motors for pump. MV variable frequency Rockwell Automation (Allen-Bradley) PowerFlex 7000, 630kW, 6kV.

Start up of 4 pcs. MV Variable Frequency Drives with manual bypass system to control 8 pcs. asynchronous motors for fans. MV Variable Frequency Drives PowerFlex 7000, 400kW, 6kV.

Total installed power 8.3MW.


Control pumps in Heating Station Tushino 1

Start up of 2 pcs. MV Variable Frequency Drives with synchronous transfer system and MV cabinets to control 4 pcs. asynchronous motors of pumps. MV Variable Frequency Drive Rockwell Automation (Allen-Bradley) PowerFlex 7000, 630kW, 6kV. Total installed power 2.5MW.

Control pumps in Heating Station Tushino 3

Project and delivery of 2 pcs. of MV VFD's to control 2 pcs. asynchronous pump motors. MV drives from Rockwell Automation (Allen-Bradley), PowerFlex 7000, 1250kW, 6kV. Installed power 2.5MW.

Control pumps in Heating Station Tushino 4

Project and delivery of 2 pcs. of MV Variable Frequency Drives with synchronous transfer system and MV cabinets to control 4pcs. asynchronous motors for pump. MV Variable Frequency Drive Rockwell Automation (Allen-Bradley) PowerFlex 7000, 400kW, 6kV. Total installed power 2.5MW.

Severoceske doly a.s., Doly Nastup Tusimice

Czech Republic, Tusimice

2006
Technical support

Technical support at start up of 2 pcs. MV Variable Frequency Drives with Sharing load function (motors works to one collective load in Master-Slave mode) and MV cabinets for main drive of paddle wheel of mining large-scale machine. MV Variable Frequency Drive Rockwell Automation (Allen-Bradley) PowerFlex 7000, 1000kW, 6kV. Total installed power 2MW.

Manex & Co a.s.

Czech Republic, Boretice

2006
LV Variable Frequency Drive

Start up of Variable Frequency Drive Rockwell Automation PowerFlex 70 for palletizator elevator.

Beekeeper

Czech Republic

2006
LV Variable Frequency Drive

Start up of Variable Frequency Drive Rockwell Automation PowerFlex 40 for drive of honey machine. More information in Beekeepers News.

Coal-mines Vattenfall Europe Mining AG

Germany, Vattenfall

2006
Service promptness for MV drives

Nonstop service promptness for coal mining Vattenfall, one of the biggest applications 6kV Frequency Drives in Europe, here for belt conveyors.

MosTeploEnerg

Russia, Moscow

2002
Control pumps in Heating Station Peredelkino 1

Project and delivery of 2pcs. of MV Variable Frequency Drives and MV cabinets to control 2pcs. asynchronous motors of air and smoke fans. MV Variable Frequency Drive Rockwell Automation (Allen-Bradley) PowerFlex 7000, 400kW, 6kV. Total installed power 0,8MW.

Control pumps in Heating Station Peredelkino 2

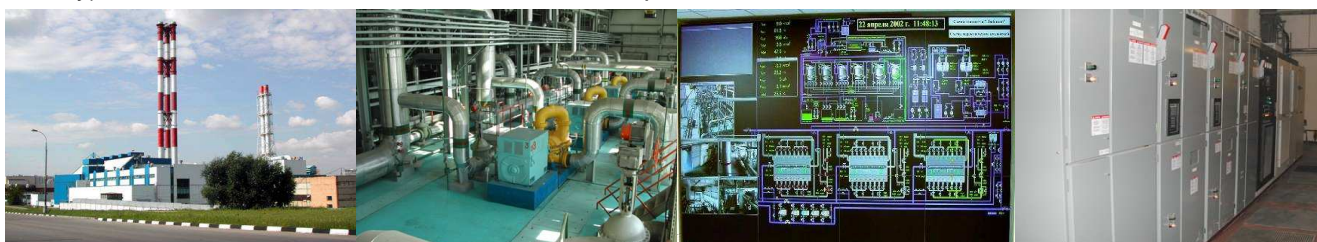
Project and delivery of 4pcs. of MV variable frequency and MV cabinets to control 4pcs. asynchronous motors of air and smoke fans. Delivery include the MV transformer and compensation. MV Variable Frequency Drive Rockwell Automation (Alle-Bradley) PowerFlex 7000, 400kW, 6kV. Total installed power 1,6MW.


MosTeploEnerg

Russia, Moscow

2001
Control pumps in Heating Station Lublino

Project, delivery and start up of MV Variable Frequency Drive with synchronous transfer system and MV cabinets to control 3pcs. asynchronous motors of pumps. MV Variable Frequency Drive Rockwell Automation (Allen-Bradley) PowerFlex 7000, 630kW, 6kV. Total installed power 1.9MW.


Control pumps and fans in Heating Station Butovo

Project, delivery and start up of 2pcs. of MV Variable Frequency Drives with synchronous transfer system and MV cabinets to control 6pcs. asynchronous motors of pumps. The delivery included MV transformer and PFC compensation. MV VFD Rockwell Automation (Allen-Bradley) 1557, 630kW, 3.4kV.

Project, delivery and start up of 4 pcs. of MV Variable Frequency Drives and MV cabinets to control 4pcs. AC motors for fans. MV VFD Rockwell Automation (Allen-Bradley) 1557, 400kW, 3.4kV. Total installed power 5.4MW.


Control pumps in Heating Station Chertanovo

Project, delivery and start up of 4 pcs. of MV Variable Frequency Drives with synchronous transfer system and MV cabinets to control 8 pcs. asynchronous motor of pumps. MV Variable Frequency Drive Rockwell Automation (Allen-Bradley) PowerFlex 7000, 630kW, 6kV. Total installed power 5MW.

Control pumps in Heating Station Krylatskoe

Project, delivery and start up of 2 pcs. of MV Variable Frequency Drive and MV cabinets to control 2pcs. asynchronous motor. Delivery includes MV transformers. MV Variable Frequency Drive Rockwell Automation Allen-Bradley) 1557, 800kW, 6kV. Total installed power 1.6MW.


ÚV Horka

Czech Republic, Sokolov

1999
Pump reconstruction for water-station Markvarec

Project, delivery and start up of softstarter SMC Dialog Plus, with local compensation, to control 3 pcs. asynchronous motors of vertical pumps 450kW, 400VAC. Total installed power 1.3 MW.